

# OREGON TRAIL SCHOOL DISTRICT 46



Student Enrollment Review  
October 2019

## Students are counted in several ways:

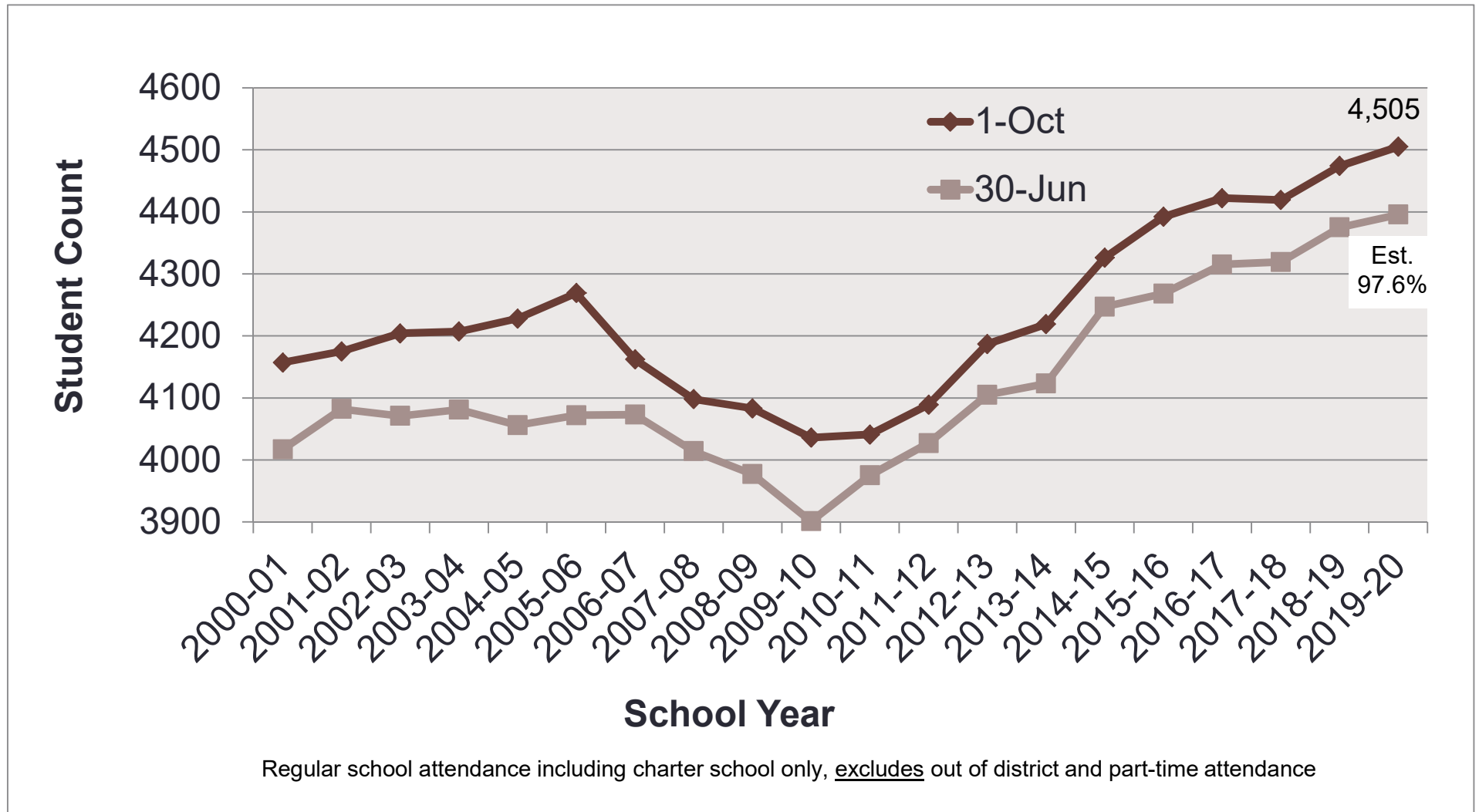
**Enrollment** – the head count of students enrolled in the district on any given day (whether present or not).

**Average Daily Attendance (ADA)** – the average time student members actually attend school over the course of a year.  
(ADA was 93.4% for 2017-18)

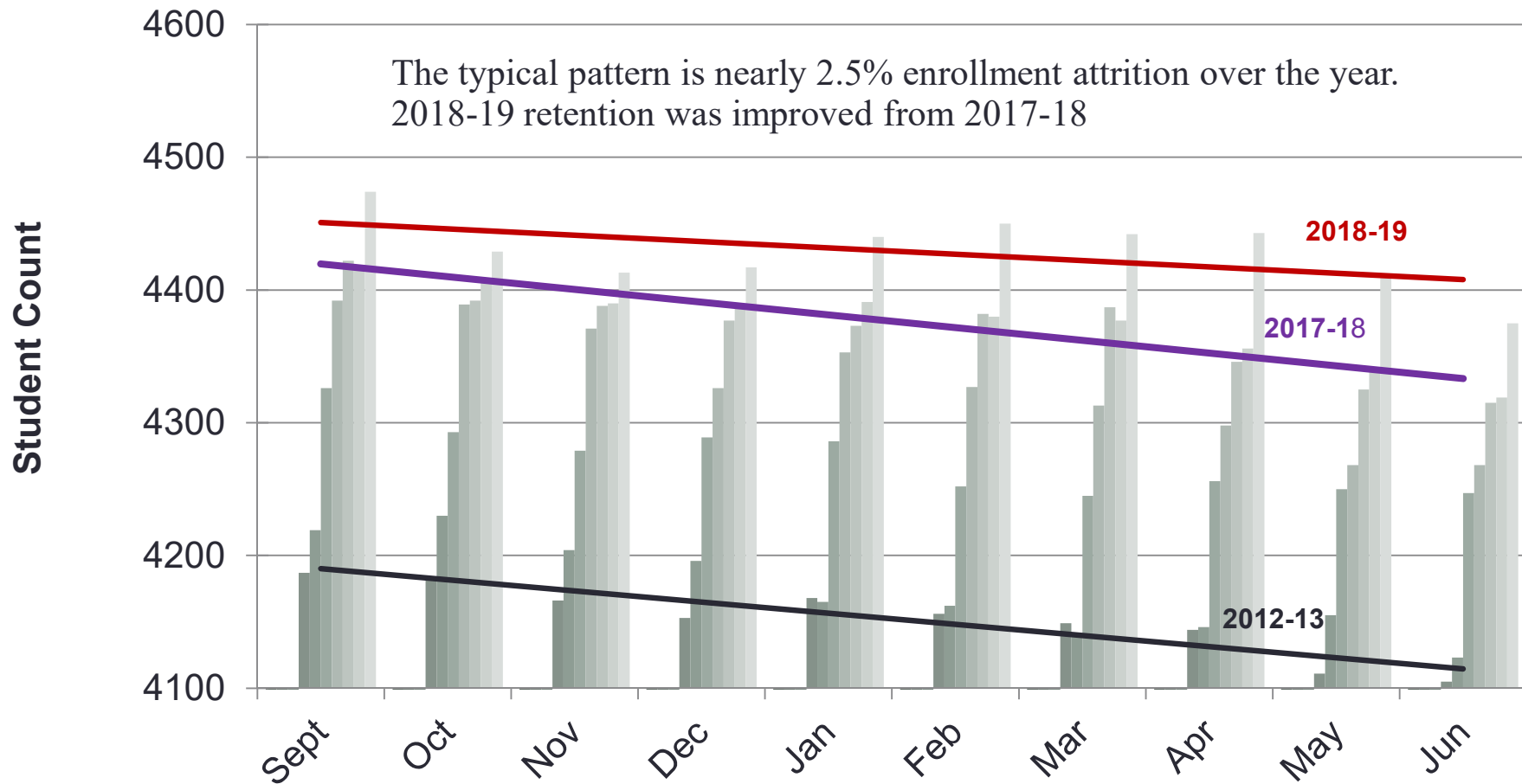
**Average Daily Membership (ADM)** – the average membership of students in the district over the course of a year (e.g. 68 days as a member in 173 day school year;  $68/173=.39$  ADM).

**ADM<sub>w</sub>** – ADM with certain student populations counted more than once, or weighted, for purposes of school funding (ELL, IEP, Poverty, etc.).

# Total Enrollment – Beginning vs. End of Year



# Regular Enrollment – By Month



Regular school attendance including charter school only, excludes out of district and part-time attendance



## Main Enrollment Categories

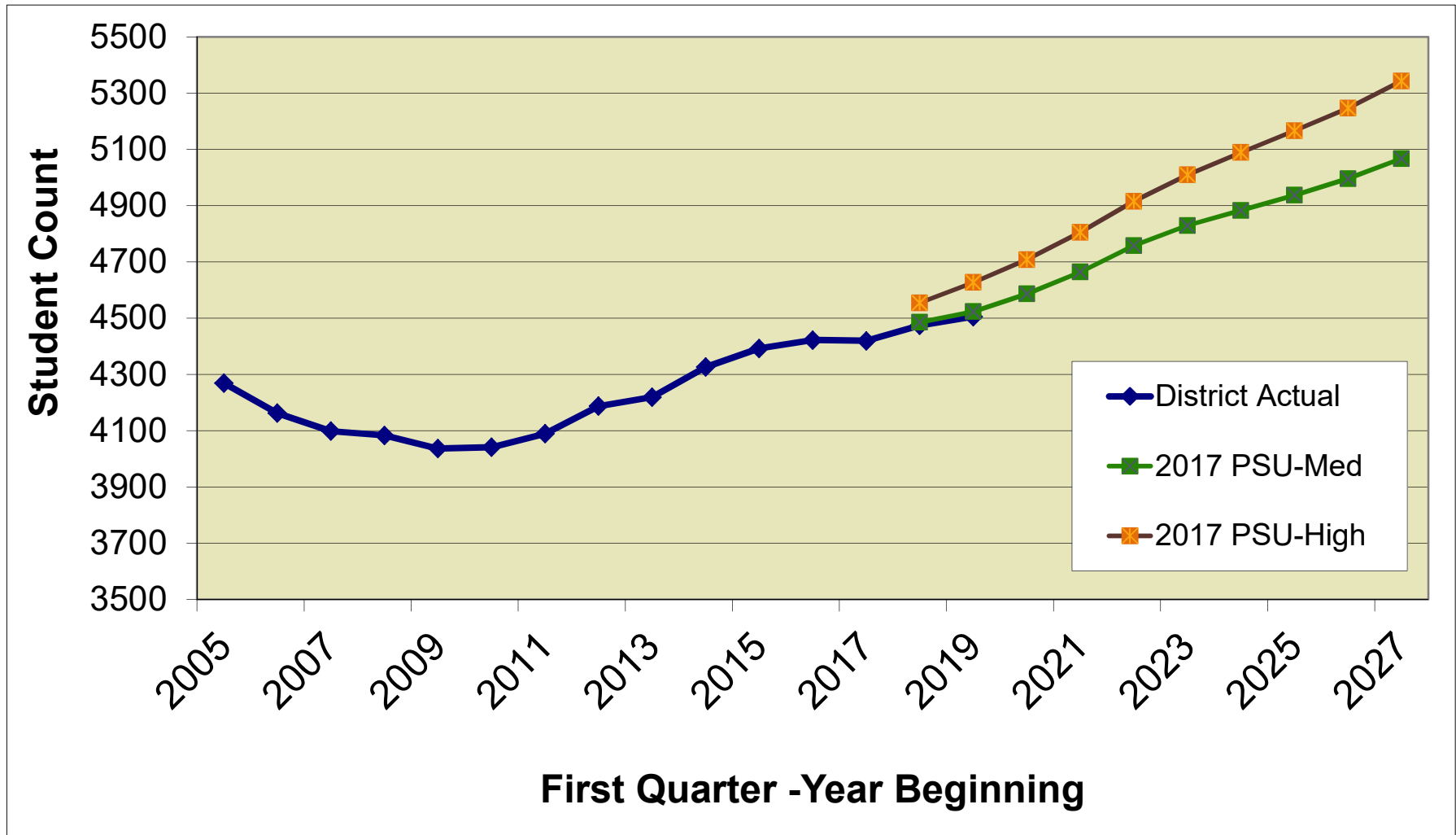
***Regular School*** – students enrolled in district schools as main education.

***Outside/Other Placements*** – students enrolled alternative programs out of district for non-traditional classroom settings, students receiving 1:1 tutoring and post high school age students.

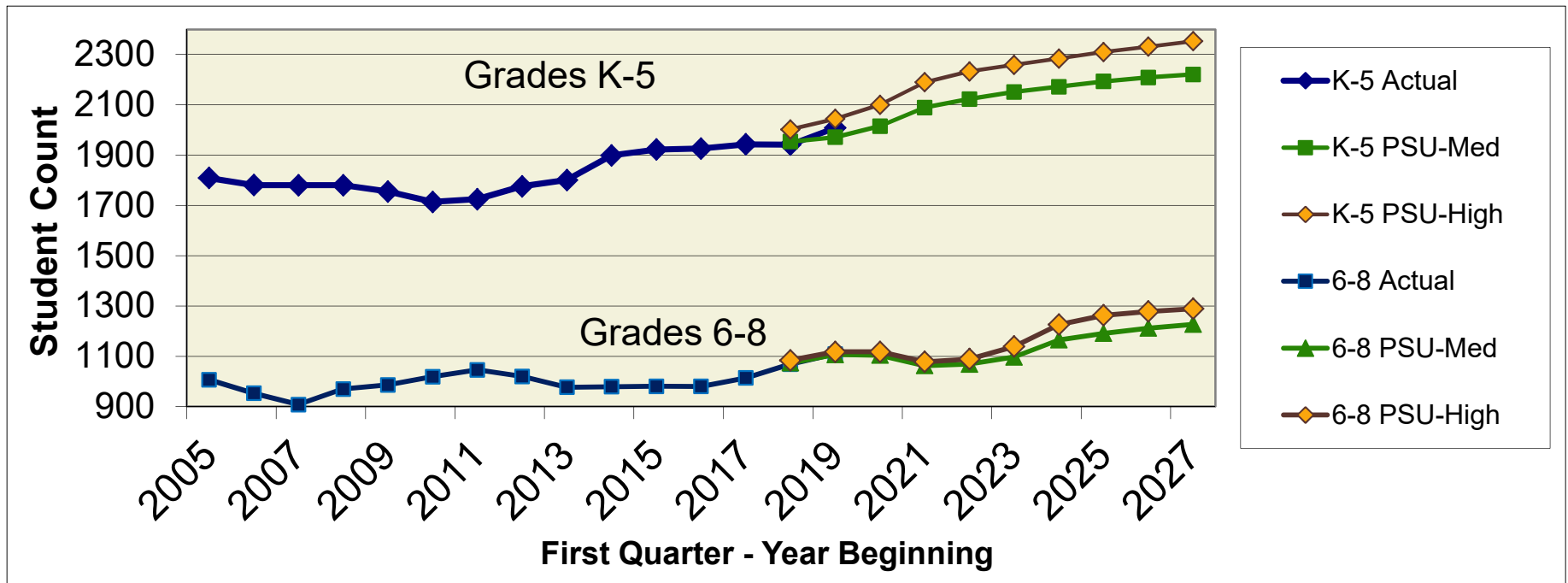
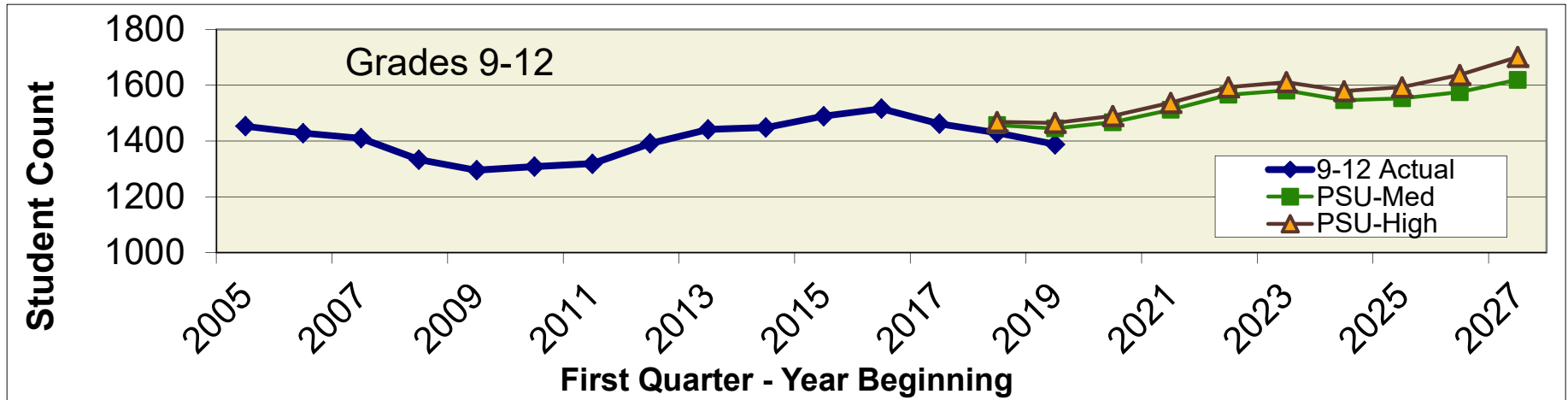
***Home School*** – student who receive main education at home. Some of these student attend district on a part-time basis. These students must be registered with the ESD. *(estimated 4% of school age children within district boundaries)*

***Private School & Non-district Sponsored Charter School*** – students who receive main education at these institutes (Phonics Factory, Hood View Jr. Academy, Good Shepherd, Central Catholic, Baker Web Academy, ORCA, etc.). There is minimal data available on OTSD student attending these schools. *(estimated 12% of school age children within district boundaries attend these schools)*

## Total Regular Enrollment Compared to PSU Study

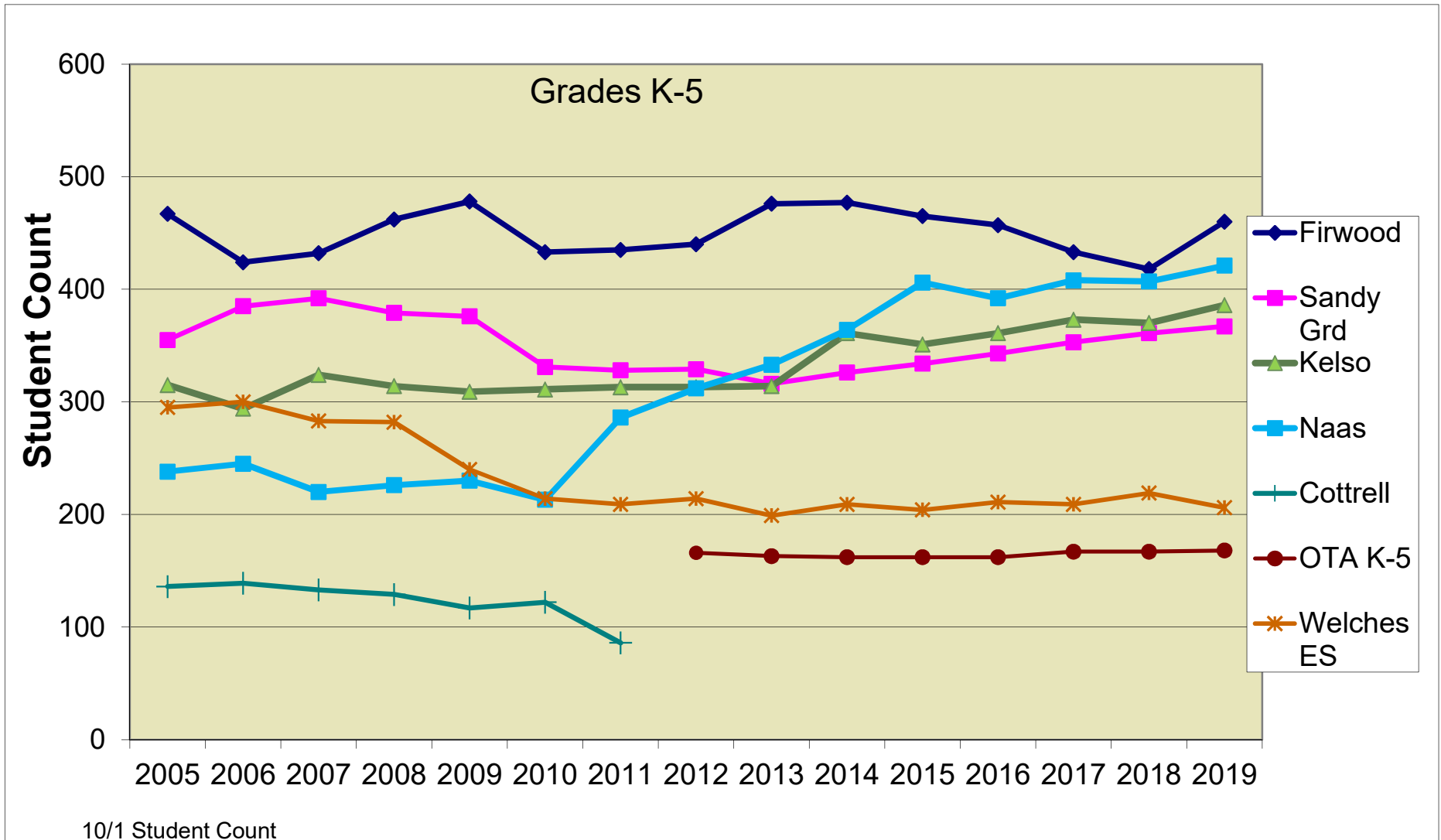


# Total Regular Enrollment Compared to PSU Study

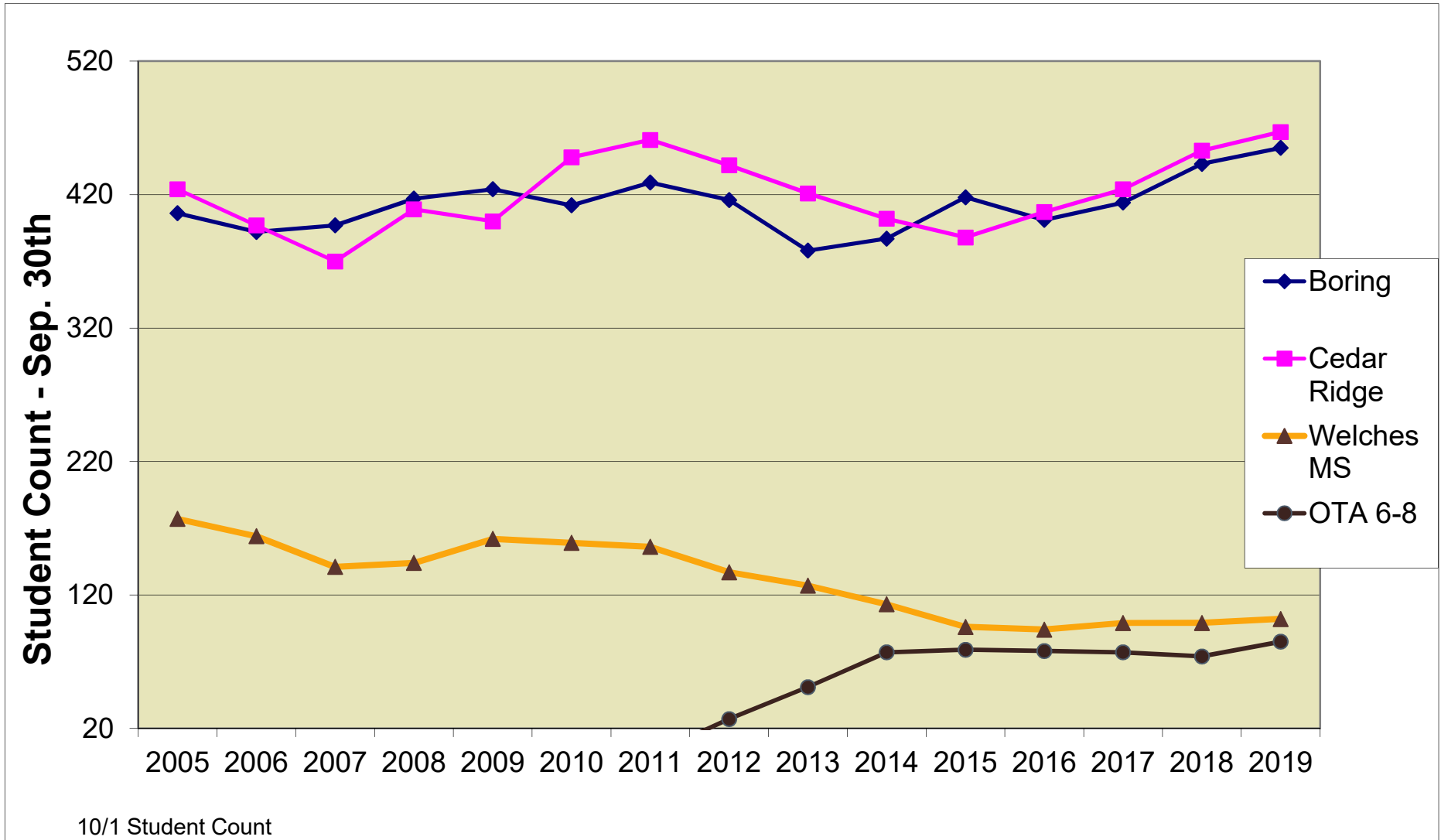




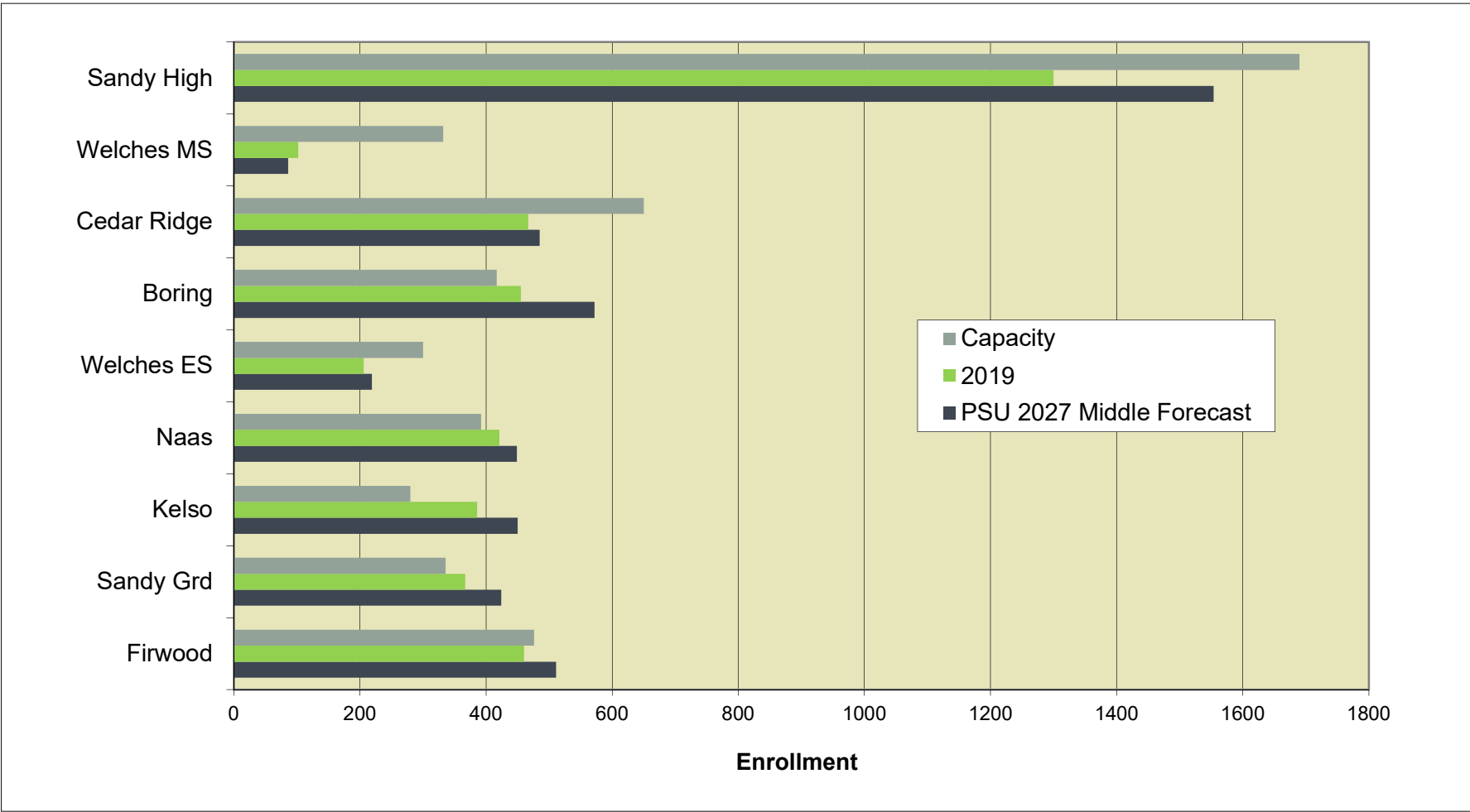
# Regular Enrollment Elementary Level Enrollment History



# Regular Enrollment Middle Level Enrollment History

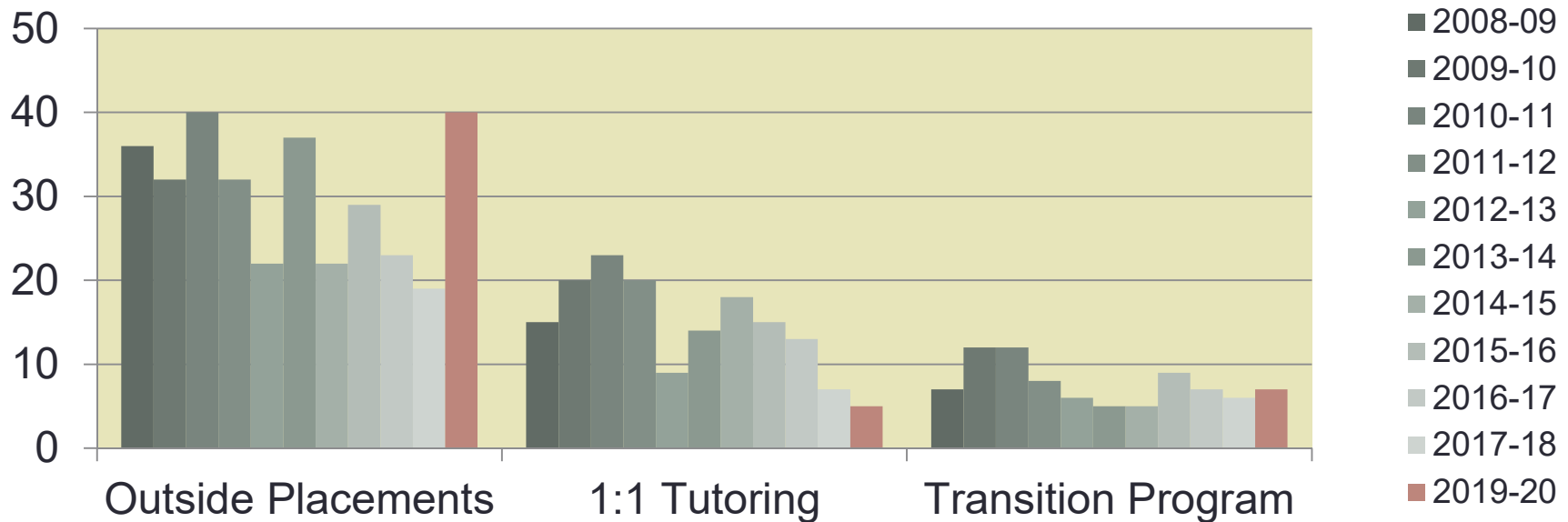


# Regular Enrollment & Academic School Capacity



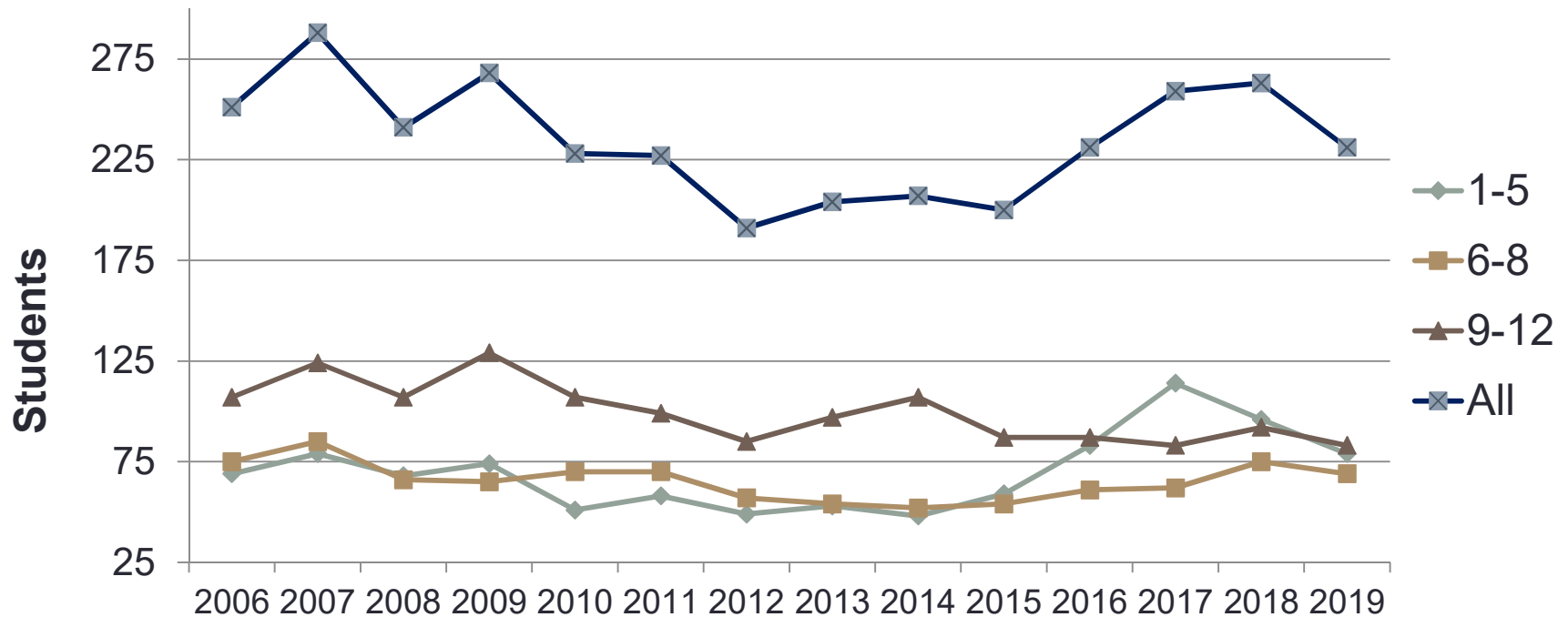
- Capacity per Soderstrom Architects 9-2019 assessment, excludes modular classrooms and BMS old gym building.
- Sandy Grade School excludes preschool capacity.

## Outside Placement/Other Enrollment History



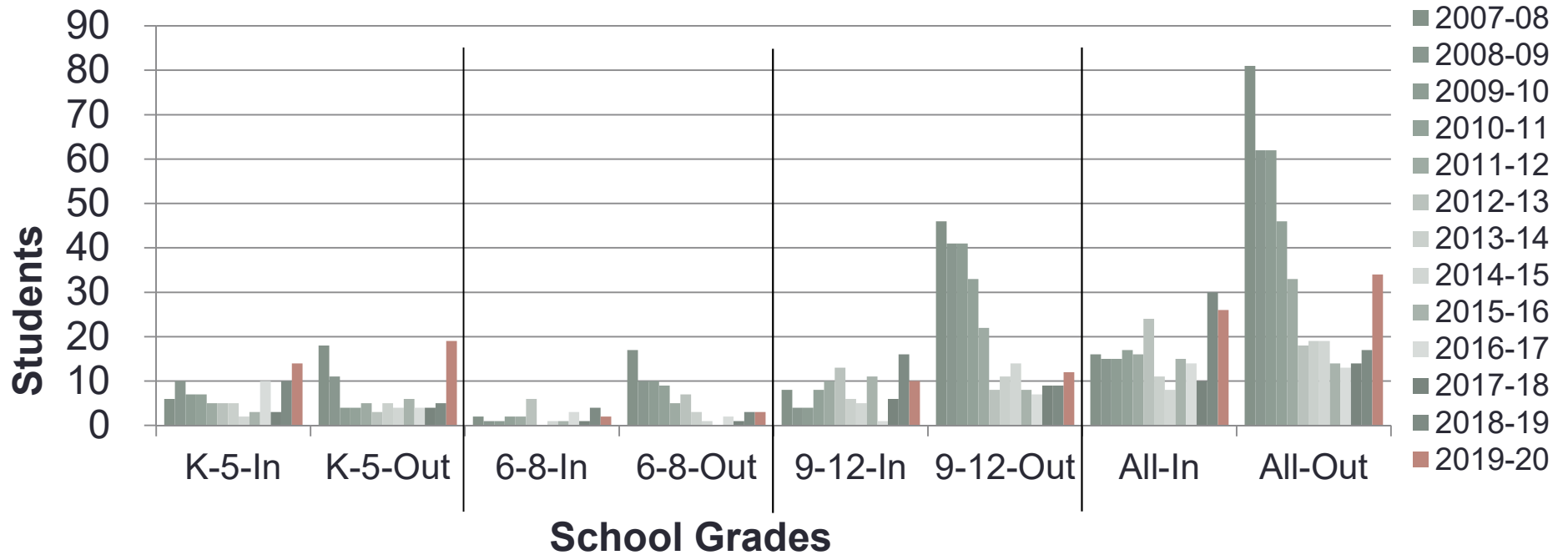
- ADM counts for funding from alternative placements is not typically equal to the enrollment head count of students served.
- Counts typically increase during the year. Final counts range from 50 to 75 students.
- Tutorial – These are students not attending regular class whom receive one-to-one or small group instruction.
- Transition student are post-high school age students, with IEP’s, who may receive service until age 21.

# Home School Registered Students



- All home schooled students are required to register with Clackamas ESD
- Actual count may be inflated as there is not requirement to notify termination of home schooling
- There is no registration requirement and no data maintained on private school placements and no reporting requirement for charter school placements.

# In/Out of District Variances



- Granting an out of district variance allows the attending district to received funding as if the student lived in their district.
- Students attending another district without a variance must pay tuition to that district.
- Net out of district variances have steadily decreased from **-65** in 2007-08 to **+13** 2018-19 and **-8** currently.
- Some students previously under variance have now moved under the open enrollment law in effect from 2011 to 2017.

	2019-20	
	From	To
Corbett SD	-	10
Estacada SD	13	1
Greater Albany SD	-	1
Gresham Barlow SD	11	16
North Clackamas SD	1	-
Reynolds SD	1	4
Parkrose SD	-	1
Tigard-Tualatin SD	-	1
	26	34

# Observations

- Overall growth is near 1% and in line with the PSU middle series forecast; K-5 enrollment is ahead, middle spot on and high school level enrollment has lagged.
- Capacity will be an issue within a few years, particularly Kelso, Naas, Sandy Grade and Boring.
- OTA's high school level enrollment has been boosted by it's new web-based program
- Sandy High enrollment has declined predominately due to the web-based program shift to OTA and graduation of an extraordinarily large senior class in the prior year (followed by a smaller incoming freshman class).
- Enrollment increase at the elementary level has resulted in the need to add three classroom teachers. One teacher was added at the middle school level. However, despite enrollment decline, no staff were reduced as the high school level (though one new position was left unfilled).
- Out of district placements has increased notably.
- Home school enrollment appears stable, slightly down.